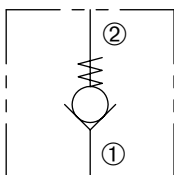


DCV-100-B

Direct-Acting, Ball-Type
Check Valve



SERIES 10

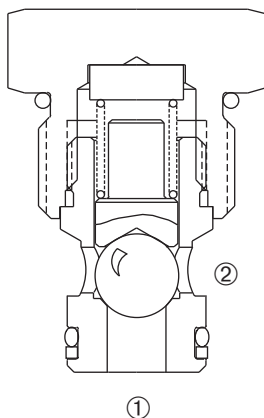


DESCRIPTION

A cartridge valve designed to allow free flow in one direction, while preventing flow in the opposite direction. This valve is commonly used as a load-holding or blocking valve.

OPERATION

Pressure at ① overcomes the spring-bias ball and allows free flow to ②. Flow in the opposite direction, from ② to ①, is blocked by the ball.



FEATURES and BENEFITS

- Chrome alloy ball for long life.
- Low leak.
- Industry common cavity.
- Compact size.

SPECIFICATIONS

Operating Pressure: 3000 PSI (207 Bar)

Flow: See PRESSURE DROP VS. FLOW graph.
Nominal Flow 20 GPM (75.7 L/min).

Internal Leakage: 2 drops/min. max. at 3000 PSI (207 Bar)

Crack Pressure:

- 5 PSI (0.3 Bar)
- 15 PSI (1.0 Bar)
- 30 PSI (2.1 Bar)
- 65 PSI (4.5 Bar)
- 100 PSI (6.9 Bar)

Temperature: -30°F to +250°F (-35°C to +120°C)

Recommended Filtration: Critical Application – ISO 17/15/13
Non-Critical Application – ISO 20/18/14

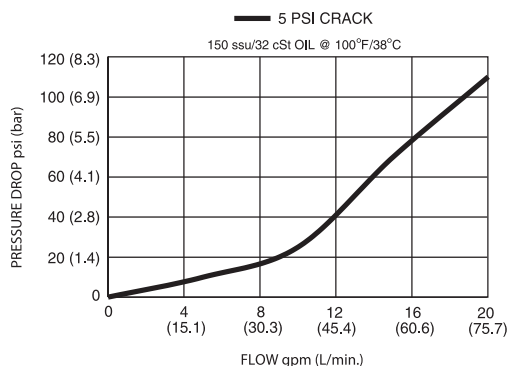
Fluids: Mineral-based fluids.

For other fluid compatibility, consult factory.

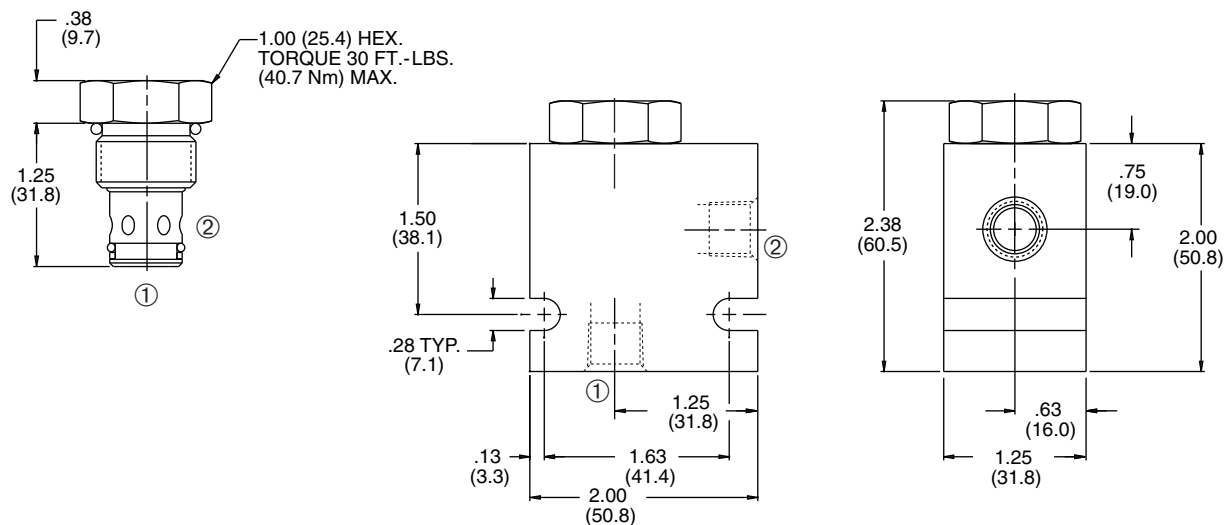
Cavity/Cavity Tool: 100-2, see page 11.10.2

In-Line Body Material: Anodized 6061T6 aluminum
alloy rated at 3000 PSI (207 Bar).

PRESSURE DROP VS. FLOW



INSTALLATION DIMENSIONS



() Parentheses = Millimeters

HOW TO ORDER

