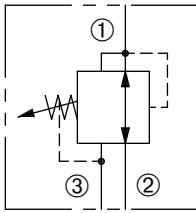


DPR-100

Adjustable, Direct-Acting,
Pressure Reducing/Relieving Valve



SERIES 10

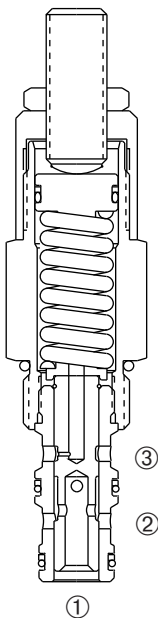


DESCRIPTION

An adjustable, direct-acting spool cartridge valve designed to regulate pressure in secondary circuits.

OPERATION

The DPR-100 in the steady state will allow bi-directional flow between ① and ② with spring chamber ③ vented. When the preset pressure at ① is achieved, the spool throttles to regulate pressure at ① by restricting flow at ②.



FEATURES and BENEFITS

- Variety of pressure ranges.
- Hardened precision spool and sleeve for long life.
- Hidden adjustment (tamper resistant) option.
- Aluminum knob and disc nut option.
- Adjustment may be locked in place.
- Industry common cavity.
- Compact size.

SPECIFICATIONS

Operating Pressure: 3000 PSI (207 Bar)

Flow: See PRESSURE DROP VS. FLOW graph.

Internal Leakage: 5 in.³/min. (82 cc/min.) max. at 3000 PSI (207 Bar)

Spring Range : 50 PSI to 200 PSI (3 to 14 Bar)

Preset: 150 PSI (10 Bar)

100 PSI to 900 PSI (7 to 62 Bar)

Preset: 450 PSI (31 Bar)

700 PSI to 2400 PSI (48 to 166 Bar)

Preset: 1800 PSI (124 Bar)

Temperature: -30°F to +250°F (-35°C to +120°C)

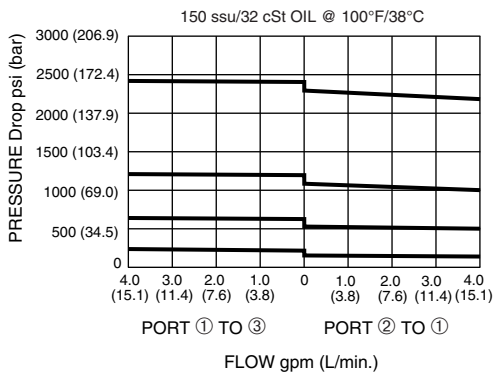
Recommended Filtration: ISO 20/18/14

Fluids: Mineral-based fluids. For other fluid compatibility, consult factory.

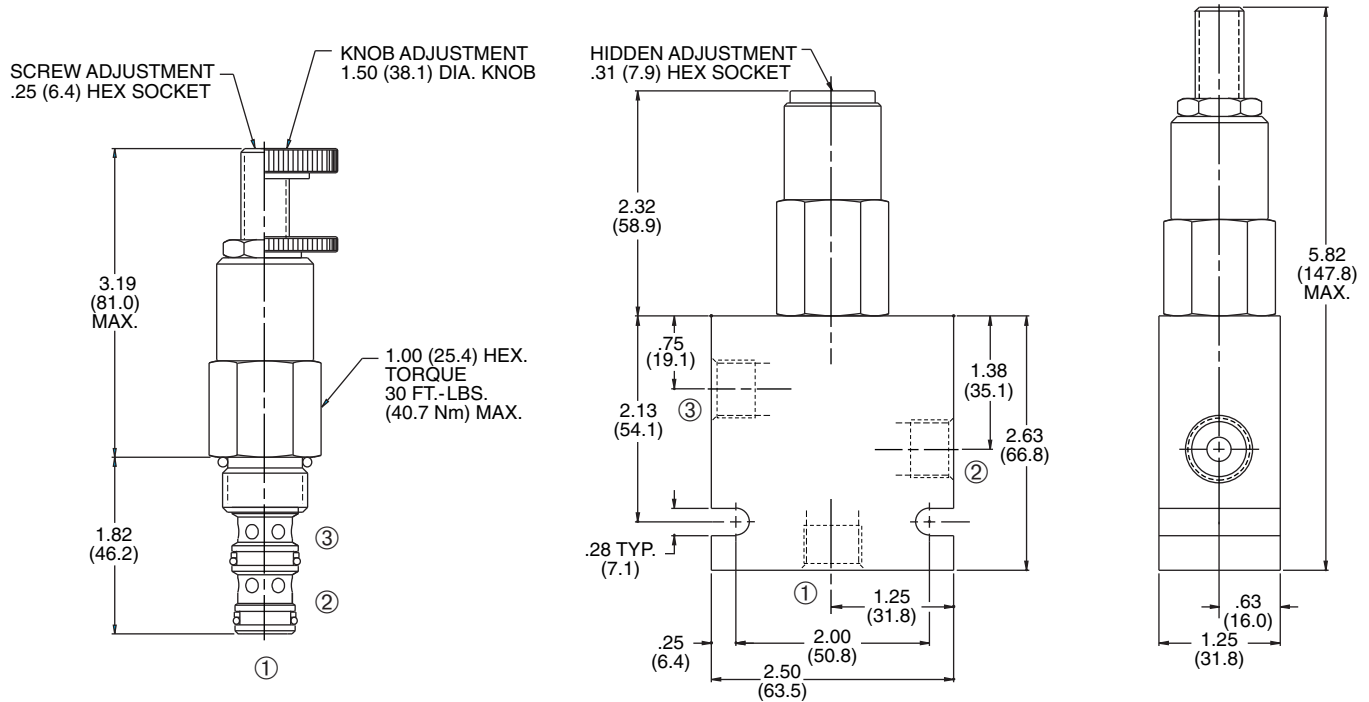
Cavity/Cavity Tool: 100-3 see page 11.10.3

In-Line Body Material: Anodized 6061T6 aluminum alloy rated at 3000 PSI (207 Bar).

PRESSURE DROP VS. FLOW

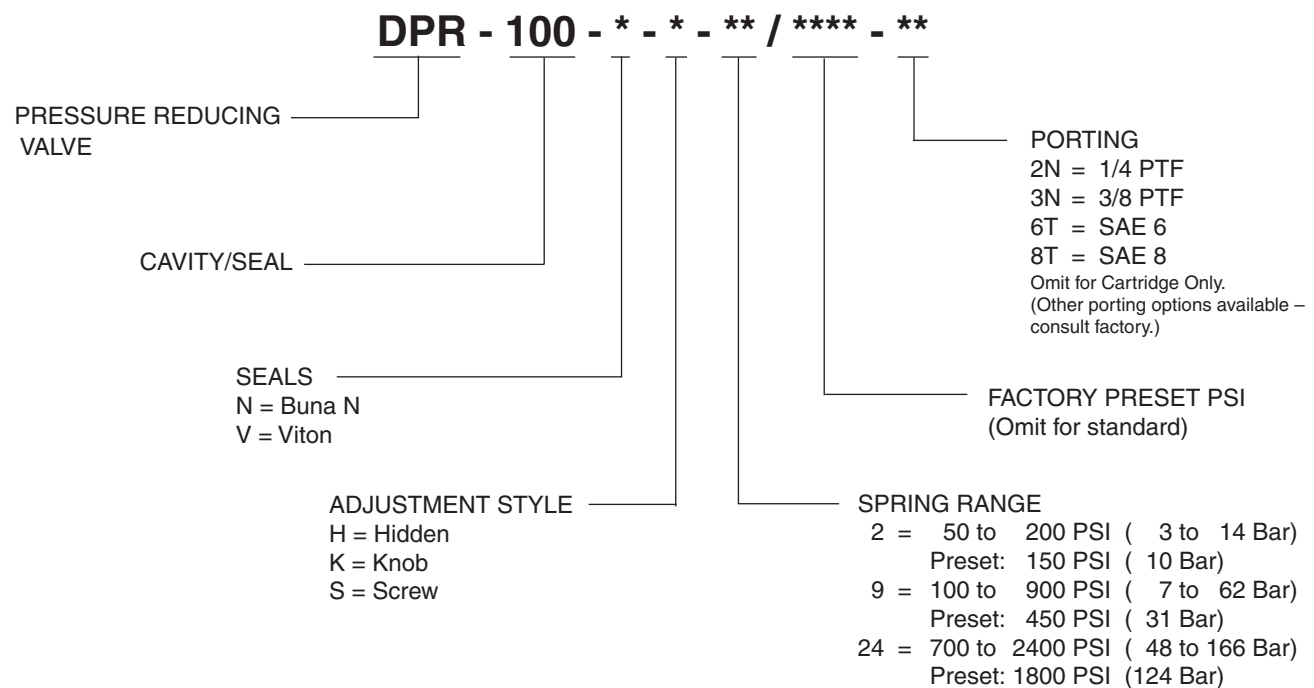


INSTALLATION DIMENSIONS



() Parentheses = Millimeters

HOW TO ORDER



SOLENOID
CHECK
MOTION CONTROL
FLOW CONTROL
RELIEF
PRESSURE CONTROL
SEQUENCE
SHUTTLE
DIRECTIONAL VALVES
ACCESSORIES
TECHNICAL DATA