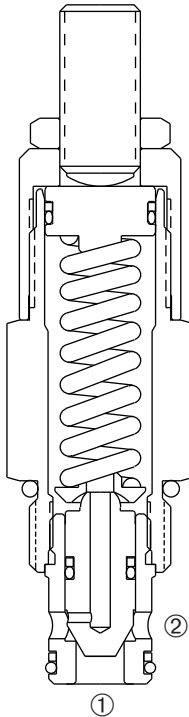
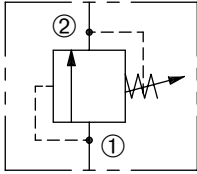


DRV-100

Adjustable,
Direct-Acting Relief Valve



SERIES 10



DESCRIPTION

An adjustable, direct-acting poppet cartridge valve designed to limit pressure in hydraulic circuits.

OPERATION

The DRV-100 prevents flow from ① to ② until the set crack pressure at ① is achieved. The poppet then unseats allowing flow from ① to ② protecting the circuit from over pressurization.

FEATURES and BENEFITS

- Rapid response to pressure surges.
- Hardened poppet and seat for long life.
- Hidden adjustment (tamper resistant) option.
- Aluminum knob and disc nut option.
- Adjustment may be locked in place.
- Adjustment prevents spring from going solid.
- Industry common cavity.
- Compact size.

SPECIFICATIONS

Operating Pressure: 3000 PSI (207 Bar)

Flow: See PRESSURE DROP VS. FLOW graph.
Nominal Flow 10 GPM (37.9 L/min).

Internal Leakage: 20 drops/min. max. at reseal.

Crack Pressure Defined: Determined at .25 gpm (0.9 L/min.)

Reseat Pressure: Nominal 80% of crack pressure.

Spring Range: 100 to 400 PSI (7 to 28 Bar)

Preset: 300 PSI (21 Bar)

300 to 1000 PSI (21 to 69 Bar)

Preset: 500 PSI (34 Bar)

300 to 2000 PSI (21 to 138 Bar)

Preset: 1500 PSI (103 Bar)

1500 to 3000 PSI (103 to 207 Bar)

Preset: 2000 PSI (138 Bar)

Temperature: -30°F to +250°F (-35°C to +120°C).

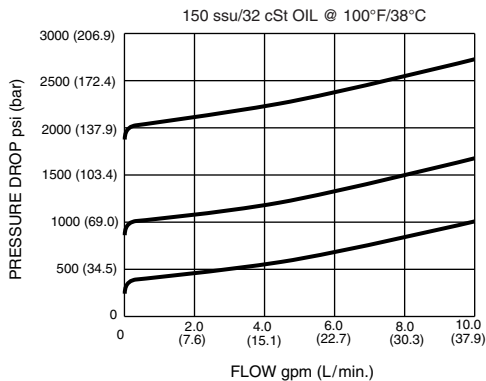
Recommended Filtration: ISO 20/18/14

Fluids: Mineral-based fluids. For other fluid compatibility, consult factory.

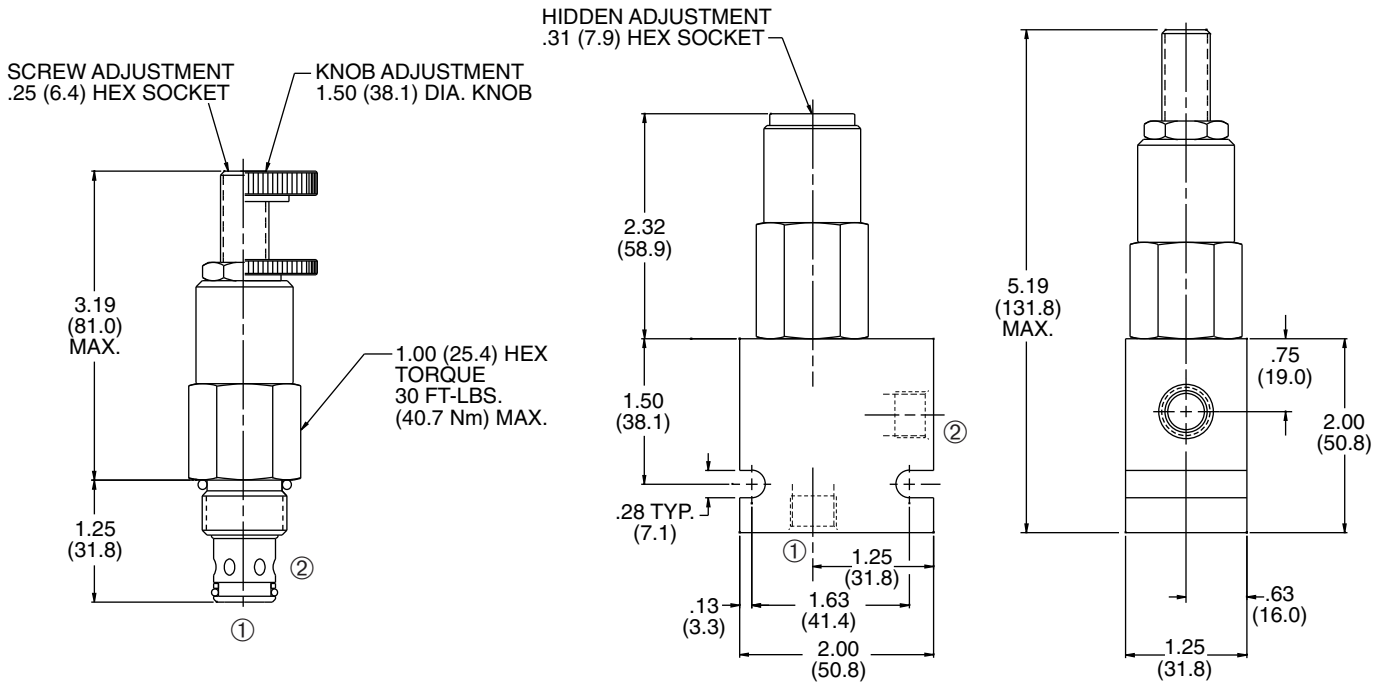
Cavity/Cavity Tool: 100-2, see page 11.10.2

In-Line Body Material: Anodized 6061T6 aluminum alloy rated at 3000 PSI (207 Bar).

PRESSURE DROP VS. FLOW



INSTALLATION DIMENSIONS



() Parentheses = Millimeters

HOW TO ORDER

