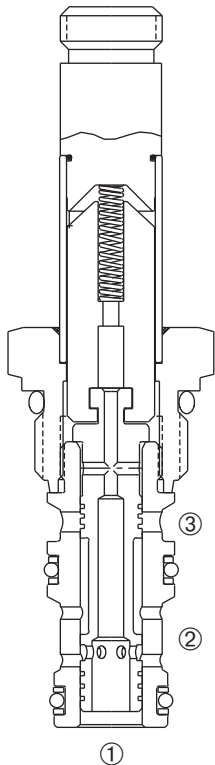
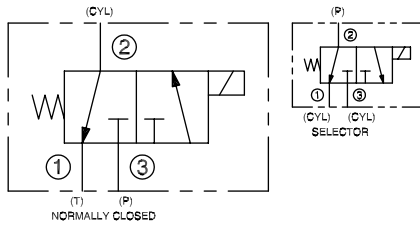


DSV2-080-3B

Three-Way, Two-Position,
Spool-Type Solenoid Valve



SERIES 8



DESCRIPTION

A cartridge valve designed as a three-way, spool-type, directional control valve.

OPERATION

When de-energized, the DSV-080-3B allows flow from ② to ①, while blocking flow at ③.

When energized, the cartridge's spool shifts to allow flow between ② and ③ while blocking flow at ①.

Operation of Manual Override Option: To override, push button in to activate. To return to normal valve function, release button.

FEATURES and BENEFITS

- Continuous-duty solenoid.
- Hardened precision spool and sleeve for long life.
- Efficient wet-armature construction.
- Cartridges are voltage interchangeable.
- Optional coil voltages and terminations.
- Manual override option.
- Industry common cavity.
- Compact size.

SPECIFICATIONS

Operating Pressure: 3000 PSI (207 Bar)

Flow: See PERFORMANCE CHARACTERISTIC graph.

Internal Leakage: (Per land) 5 in.³/min. (82 cc/min.) max. at 3000 PSI (207 Bar)

Temperature: -30°F to +250°F (-35°C to +120°C)

Coil Rating: Continuous from 85% to 110% of rated voltage.

Current Draw: 12 VDC is 1.3 amps.

Minimum Pull-In Voltage: 85% of rated voltage at 3000 PSI (207 Bar)

Response Time: 80% of final change of state with 100% voltage supplied at 100% of nominal flow rating.

Pull-In: 12 VDC 45 m. sec. **Drop-Out:** 12 VDC 57 m. sec.

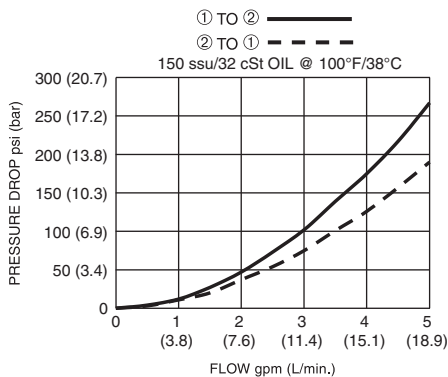
Recommended Filtration: ISO 17/15/13

Fluids: Mineral-based fluids. For other fluid compatibility, consult factory.

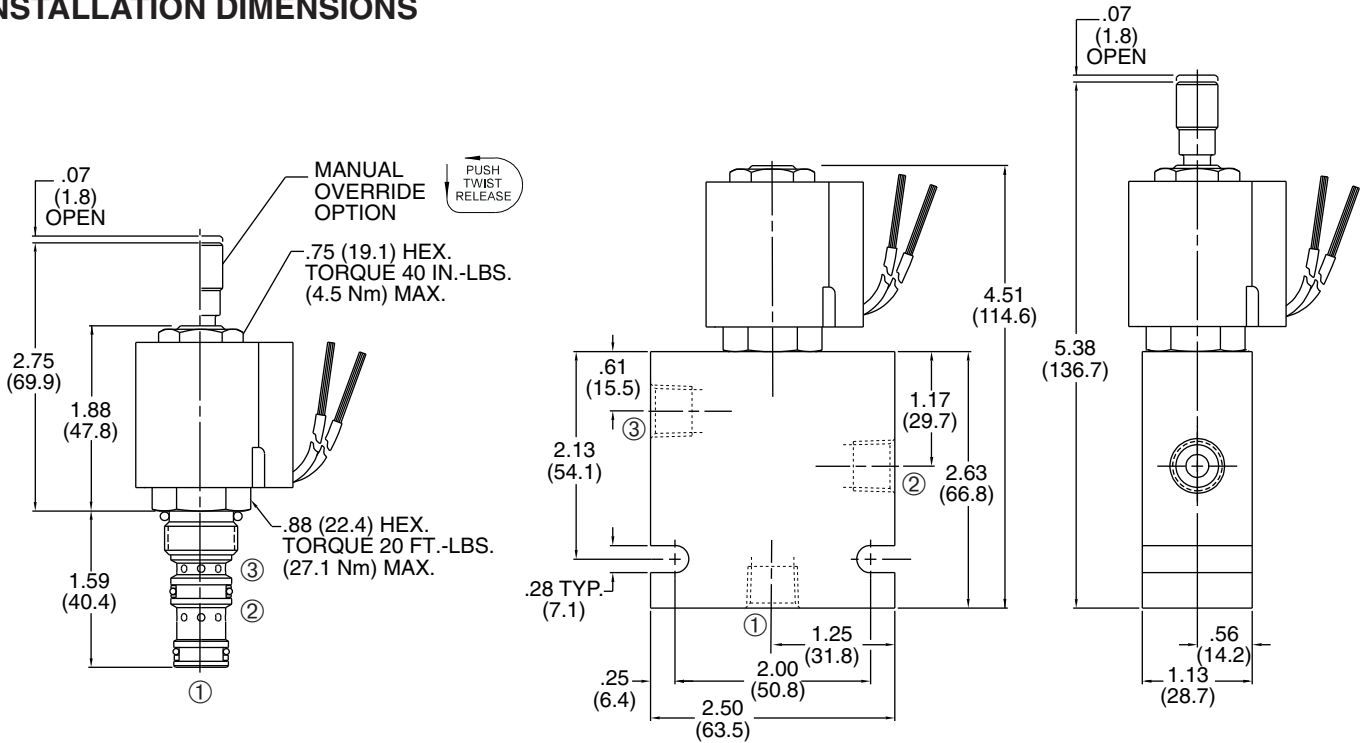
Cavity/Cavity Tool: 080-3, see page 11.08.3

In-Line Body Material: Anodized 6061T6 aluminum alloy rated at 3000 PSI (207 Bar).

PRESSURE DROP VS. FLOW

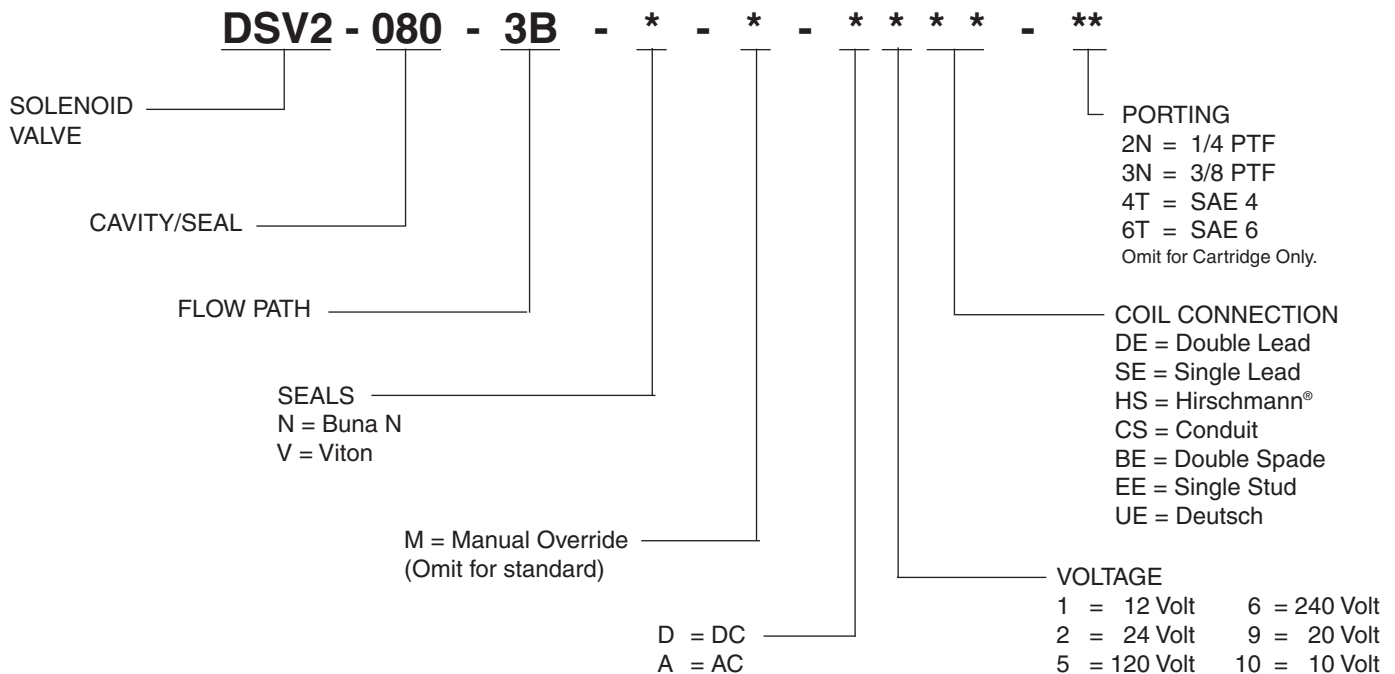


INSTALLATION DIMENSIONS



() Parentheses = Millimeters

HOW TO ORDER



Omit coil for cartridge only with nut.
Other porting and coil options available – consult factory.

SOLENOID
CHECK
MOTION CONTROL
FLOW CONTROL
RELIEF
PRESSURE CONTROL
SEQUENCE
SHUTTLE
DIRECTIONAL VALVES
ACCESSORIES
TECHNICAL DATA