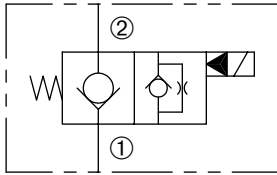


# DSV2-100-2NCP

Normally-Closed, Two-Way, Two-Position,  
Pilot-Operated Solenoid Valve



## SERIES 10



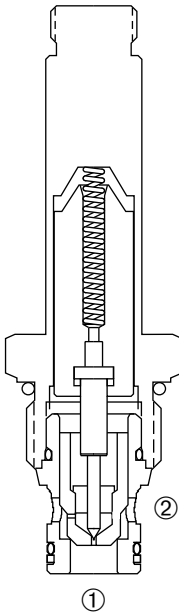
### DESCRIPTION

A cartridge valve designed with positive shut off to be used in load holding applications.

### OPERATION

When de-energized, the DSV2-100-2NCP acts as a check valve, allowing flow from ① to ②, while blocking flow from ② to ①. When energized, the poppet lifts to open the ② to ① flow path.

**Operation of Manual Override Option:** To override, push button in, twist counterclockwise and release. In this position, valve will remain open in a detented condition. To return to normal operation, push button in, twist clockwise and release. Override will be detented in this position.

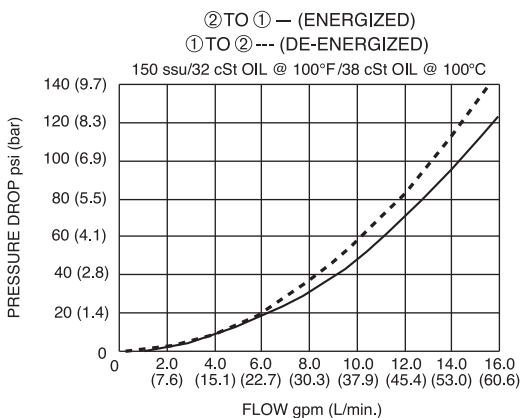


### FEATURES and BENEFITS

- Continuous-duty solenoid.
- Hardened poppet and plunger for long life and low leakage.
- Efficient wet-armature construction.
- Cartridges are voltage interchangeable.
- Optional coil voltages and terminations.
- Filter screen standard.
- Manual override option.
- Industry common cavity.
- Compact size.

### SPECIFICATIONS

#### PRESSURE DROP VS. FLOW



**Operating Pressure:** 3000 PSI (207 Bar)

**Flow:** See PRESSURE DROP VS. FLOW graph.

**Internal Leakage:** 5 drops/min. max. at 3000 PSI (207 Bar)

**Temperature:** -30° F to +250° F (-35°C to +120° C)

**Coil Rating:** Continuous from 85% to 110% of rated voltage.

**Current Draw:** 12 VDC is 1.8 amps.

**Minimum Pull-In Voltage:** 85% of rated voltage at 3000 PSI (207 Bar)

**Response Time:** 80% of final change of state with 100% voltage supplied at 100% of nominal flow rating.

**Pull-In:** 12 VDC 100 m. sec. **Drop-Out:** 12 VDC 180 m. sec.

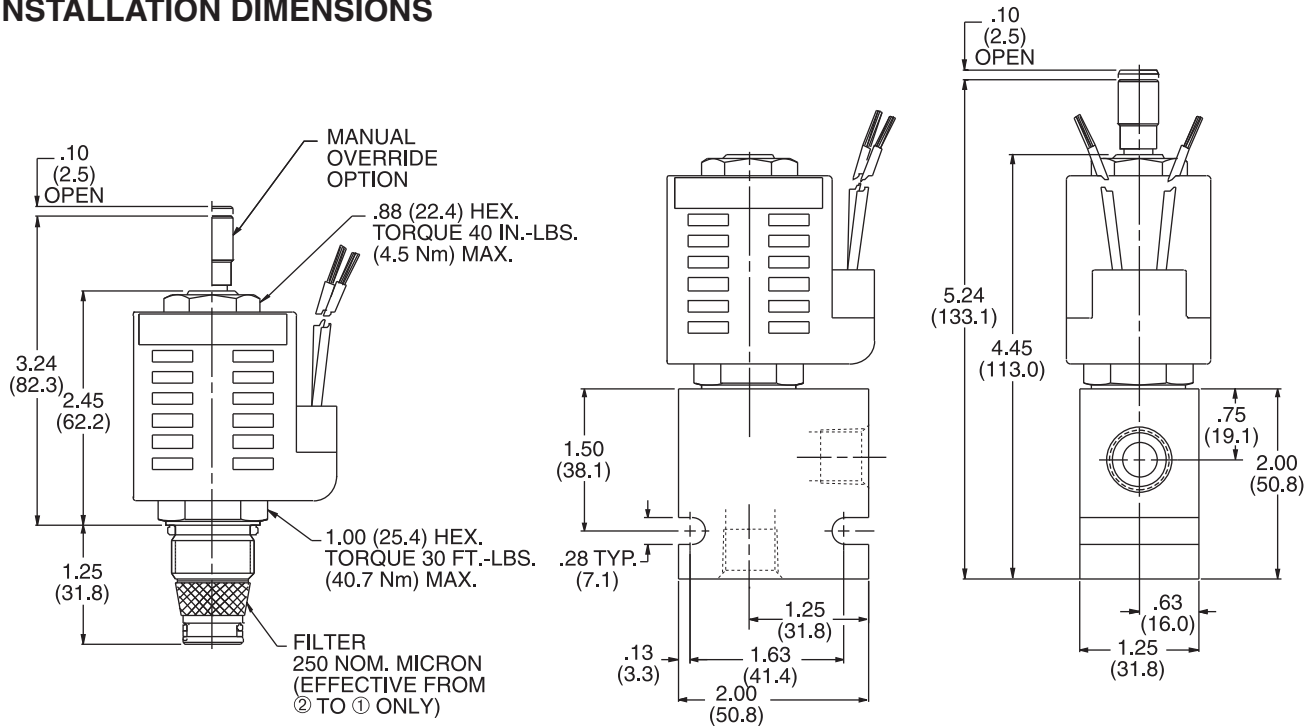
**Recommended Filtration:** Critical Application-ISO 17/15/13  
Non-Critical Application-ISO 20/18/14

**Fluids:** Mineral-based fluids. For other fluid compatibility consult factory.

**Cavity/Cavity Tool:** 100-2, see page 11.10.2

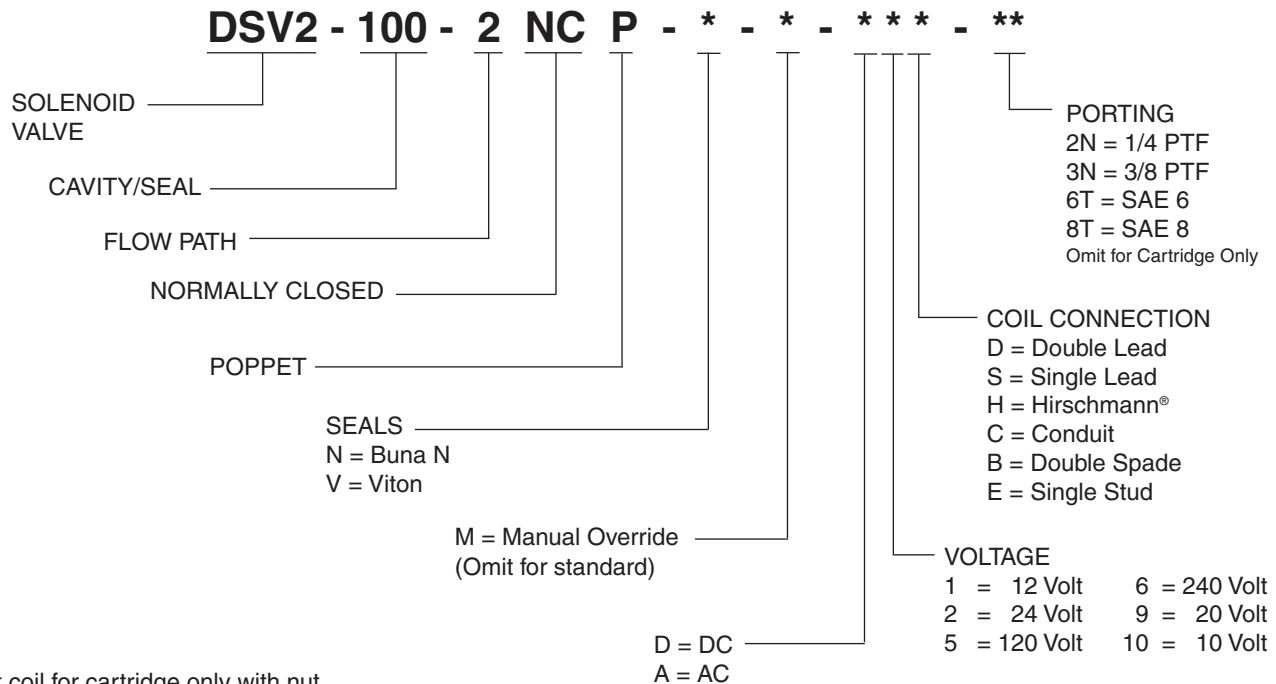
**In-Line Body Material:** Anodized 6061T6 aluminum alloy rated at 3000 PSI (207 Bar).

**INSTALLATION DIMENSIONS**



( ) Parentheses = Millimeters

**HOW TO ORDER**



Omit coil for cartridge only with nut.  
Other porting and coil options available – consult factory.

SOLENOID  
CHECK  
MOTION CONTROL  
FLOW CONTROL  
RELIEF  
PRESSURE CONTROL  
SEQUENCE  
SHUTTLE  
DIRECTIONAL VALVES  
ACCESSORIES  
TECHNICAL DATA