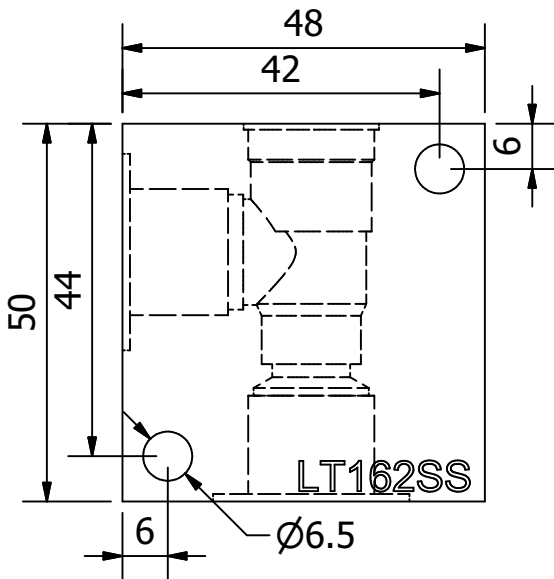
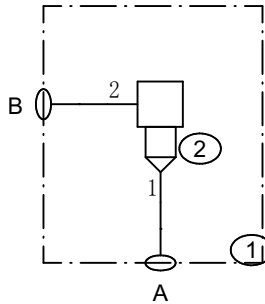
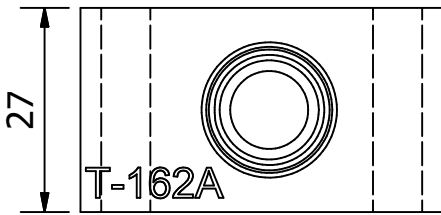
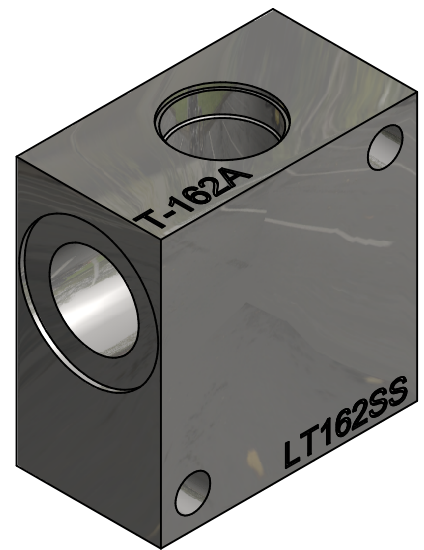


# T-162A STAINLESS STEEL LINE BODY - LT162SS



| ITEM ID | PART NUMBER | QTY | DESCRIPTION                      |
|---------|-------------|-----|----------------------------------|
| 1       | LT162SS     | 1   | T-162A STAINLESS STEEL LINE BODY |
| 2       | T-162A      | 1   | SUN CAVITY                       |

| ITEM ID | PORT SIZE |
|---------|-----------|
| A, B    | G 3/8-19  |



**Part Number:** LT162SS  
**Description:** T-162A Stainless Steel Line Body  
**Material:** 316 Stainless Steel  
**Max Pressure:** 350 Bar  
**Mounting:** 2x  $\varnothing 6.5$ mm Through Holes  
**Valves:** CNAC, CNBC, CSAW, CSAY, CXAD, CXBA, FCBB, FXBA, NCBB, NFBC, RDBA, RPCC, RQCB

| Part No. | Material            | Weight Kg | Price |
|----------|---------------------|-----------|-------|
| LT162SS  | 316 Stainless Steel | 0.4       | \$570 |



Temisi Engineering Pty Ltd  
 65 Shaun Parade  
 Elimbah, 4516  
 QLD  
 Web: [www.Temisi.com](http://www.Temisi.com)  
 Email: [Sales@temisi.com](mailto:Sales@temisi.com)

This document contains Proprietary Information and is NOT to be Reproduced without the Written Permission from TEMISI ENGINEERING PTY LTD.  
 Dimensions, Specifications and Prices are Subject to change without notice.

T-162A LINE BODY

