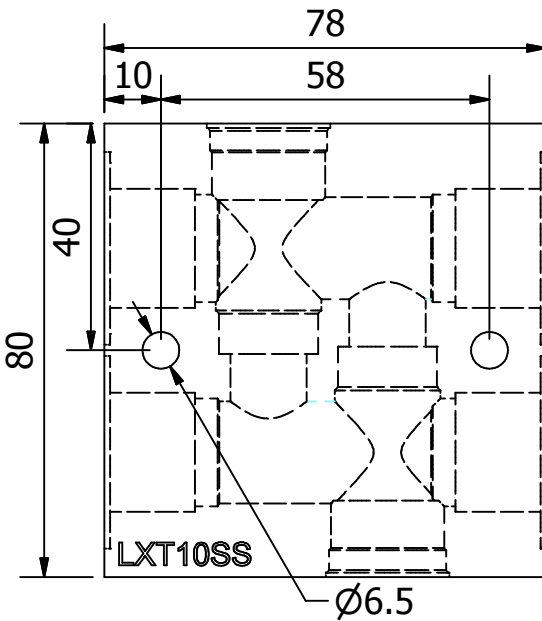
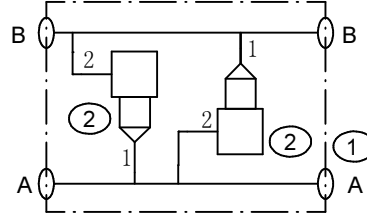
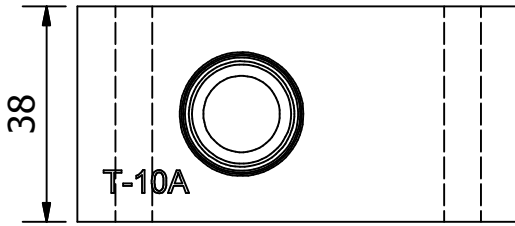
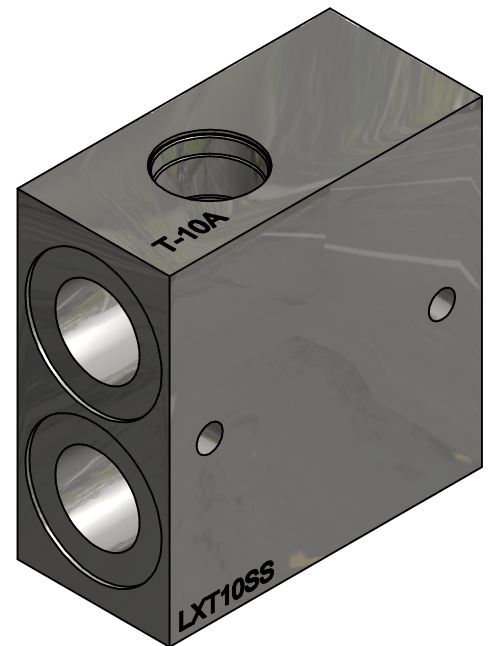


T-10A STAINLESS STEEL CROSSLINE MANIFOLD - LTX10SS



ITEM ID	PART NUMBER	QTY	DESCRIPTION
1	LTX10SS	1	T-10A SS CROSSLINE MANIFOLD
2	T-10A	1	SUN CAVITY

ITEM ID	PORT SIZE
A, B	G 1/2-14



Part Number: LTX10SS
Description: T-10A Stainless Steel Crossover Manifold
Material: 316 Stainless Steel
Max Pressure: 350 Bar
Mounting: 2x Ø6.5mm Through Holes
Valves: CXDF, RBAC, RBAT, RDDA, RDDT, RPEC, RPEE, RPES, RPET

Part No.	Material	Weight Kg	Price
LTX10SS	316 Stainless Steel	1.4	\$861



Temisi Engineering Pty Ltd
 65 Shaun Parade
 Elimbah, 4516
 QLD
 Web: www.Temisi.com
 Email: Sales@temisi.com

This document contains Proprietary Information and is NOT to be Reproduced without the Written Permission from TEMISI ENGINEERING PTY LTD.
 Dimensions, Specifications and Prices are Subject to change without notice.

T-10A DUAL CROSSLINE BODY

